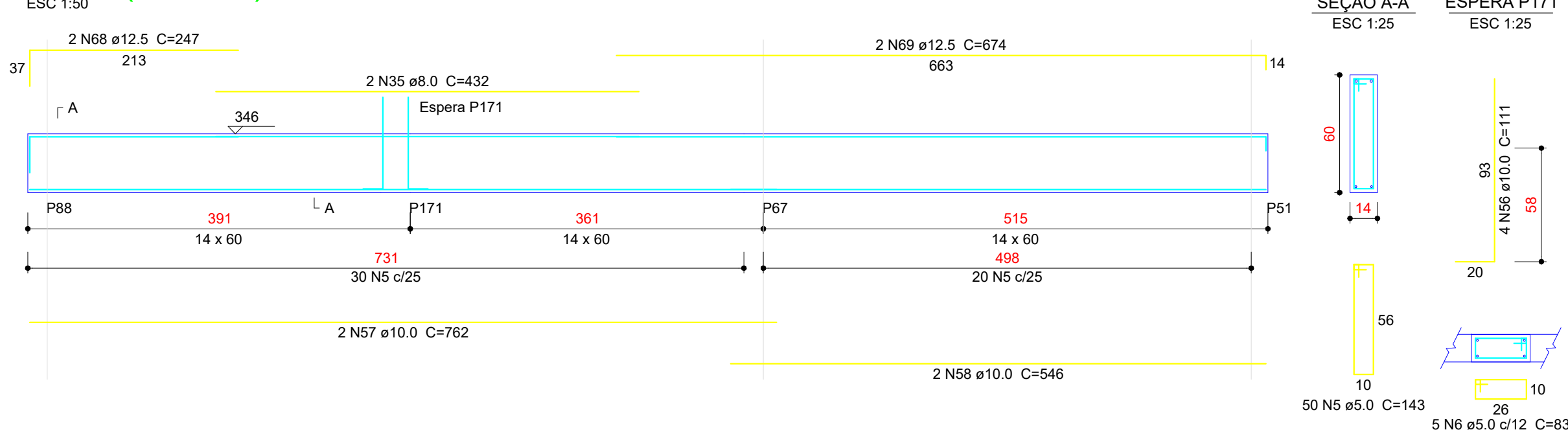
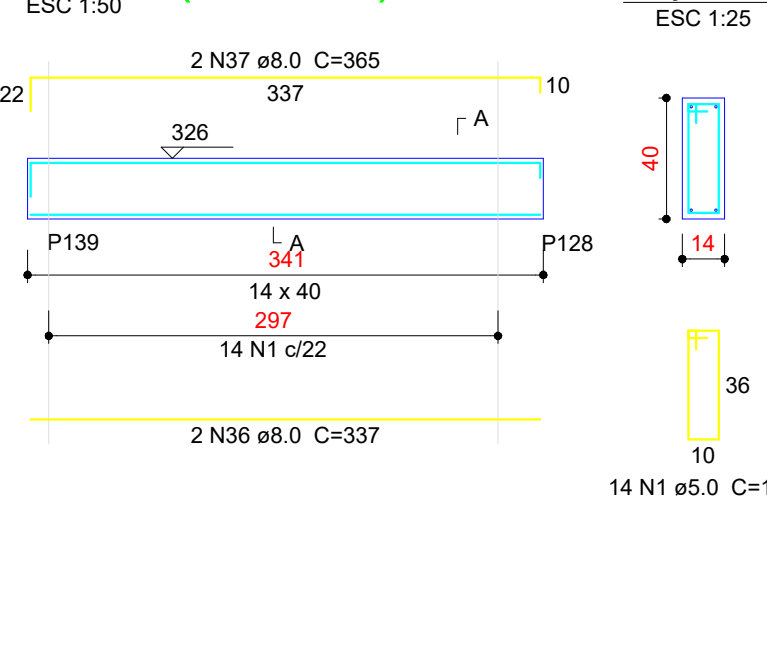


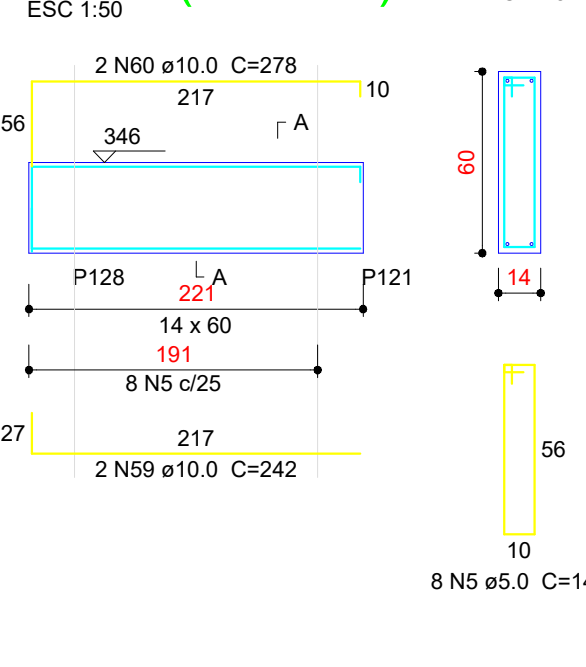
V284 (14 x 60)



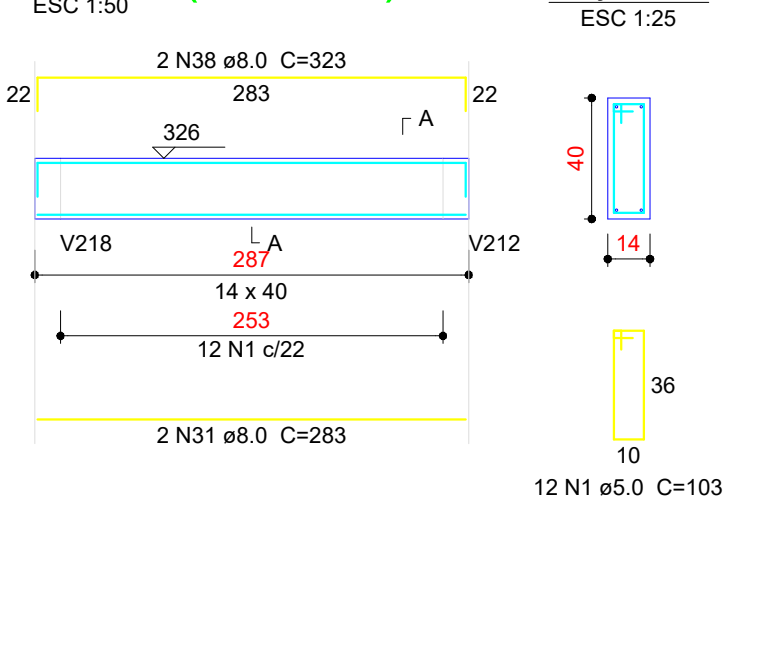
V287 (14 x 40)



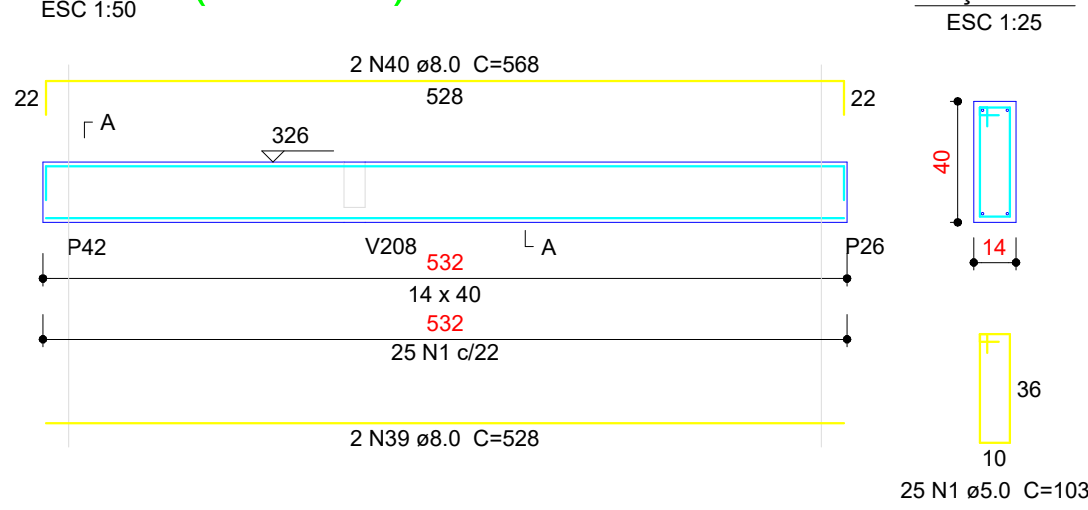
V288 (14 x 60)



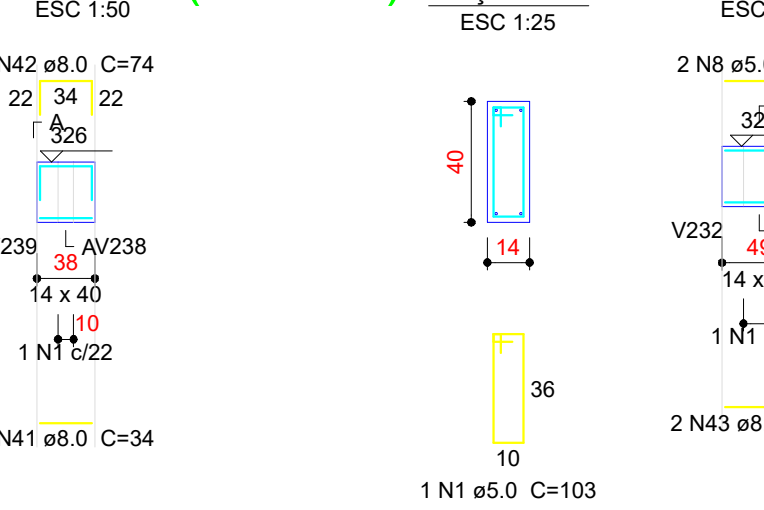
V291 (14 x 40)



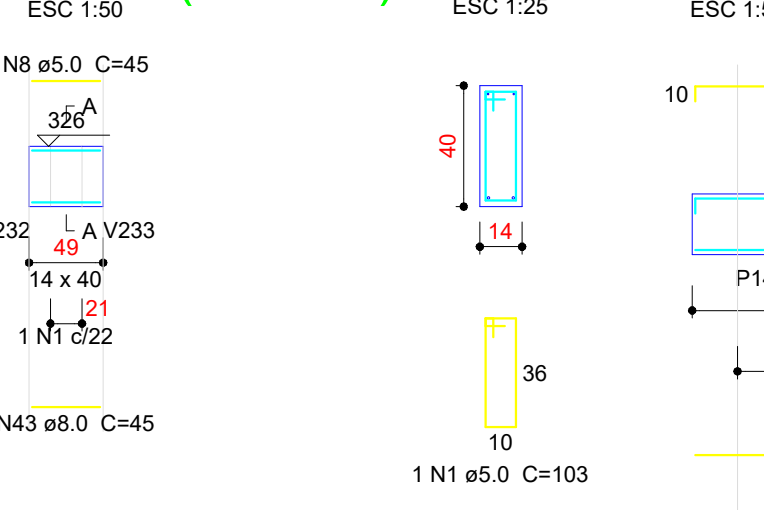
V293 (14 x 40)



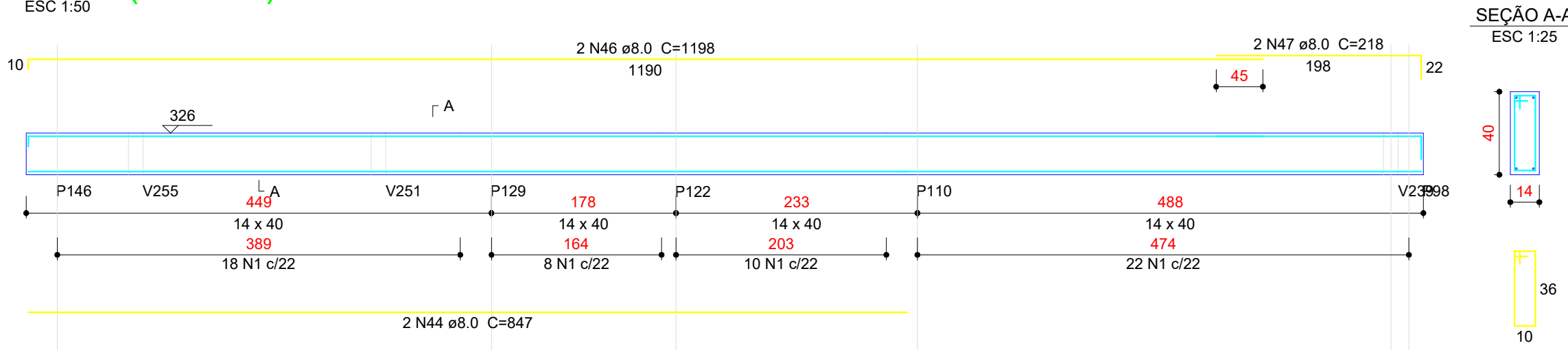
V294 (14 x 40)



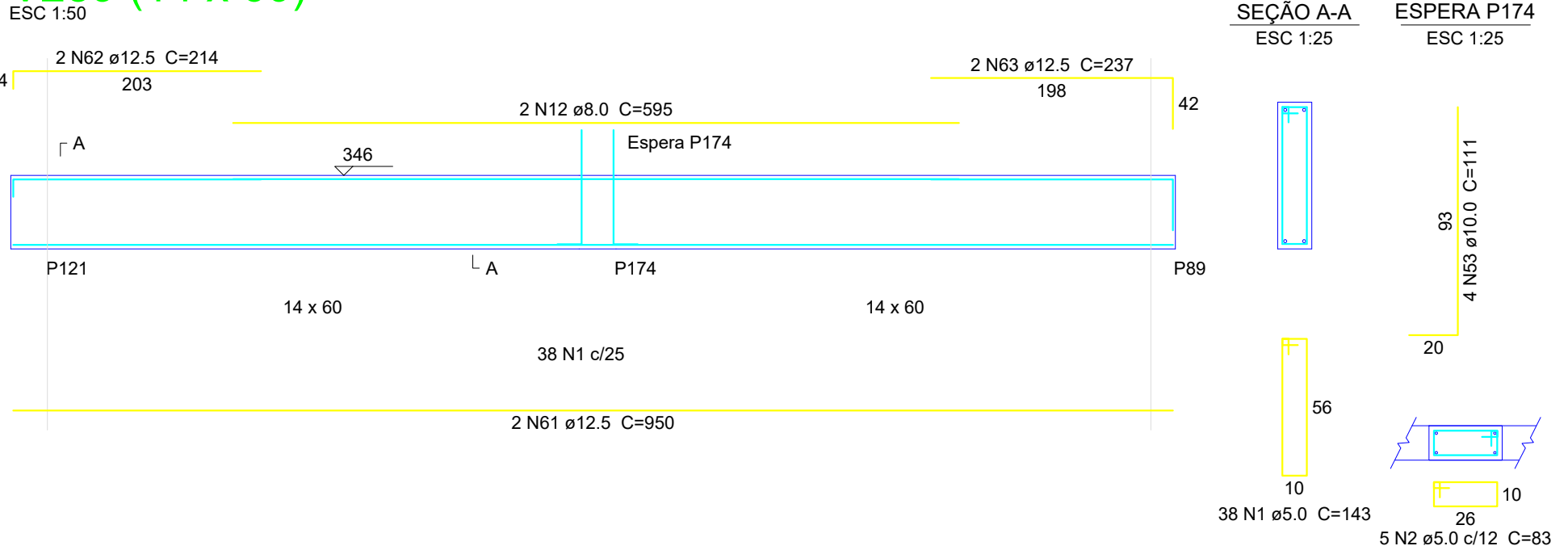
V295 (14 x 40)



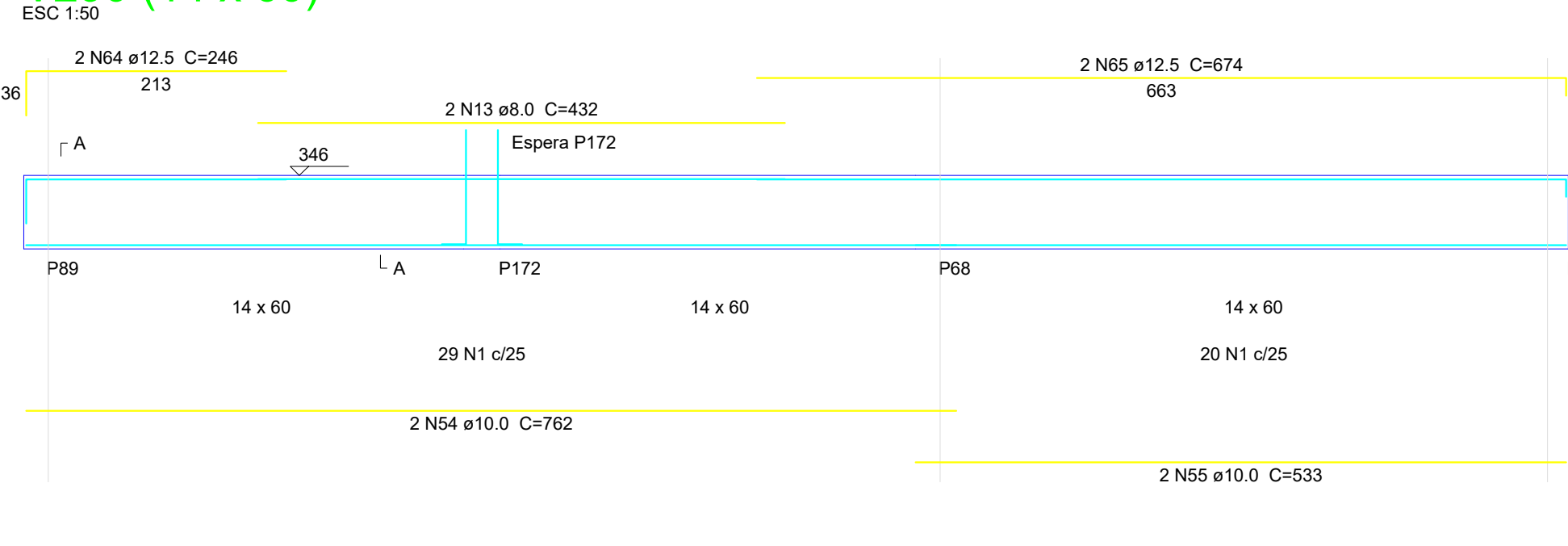
V296 (14 x 40)



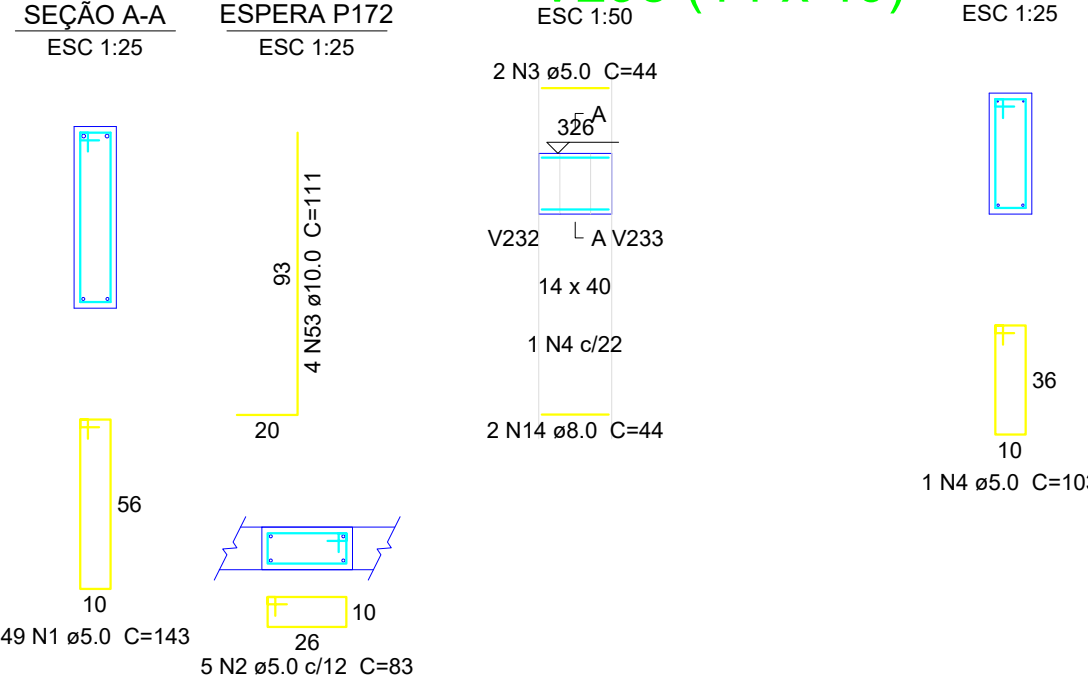
V289 (14 x 60)



V290 (14 x 60)



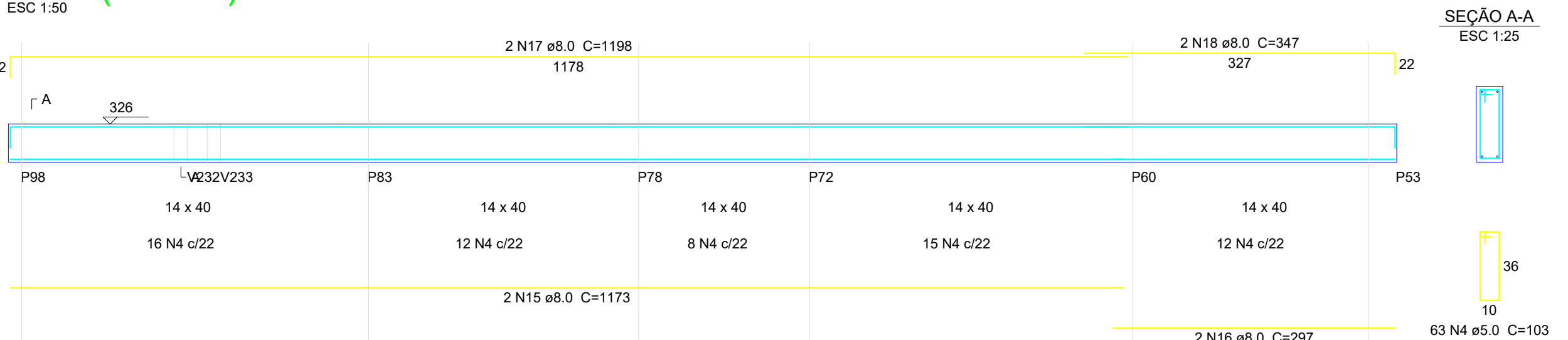
V298 (14 x 40)



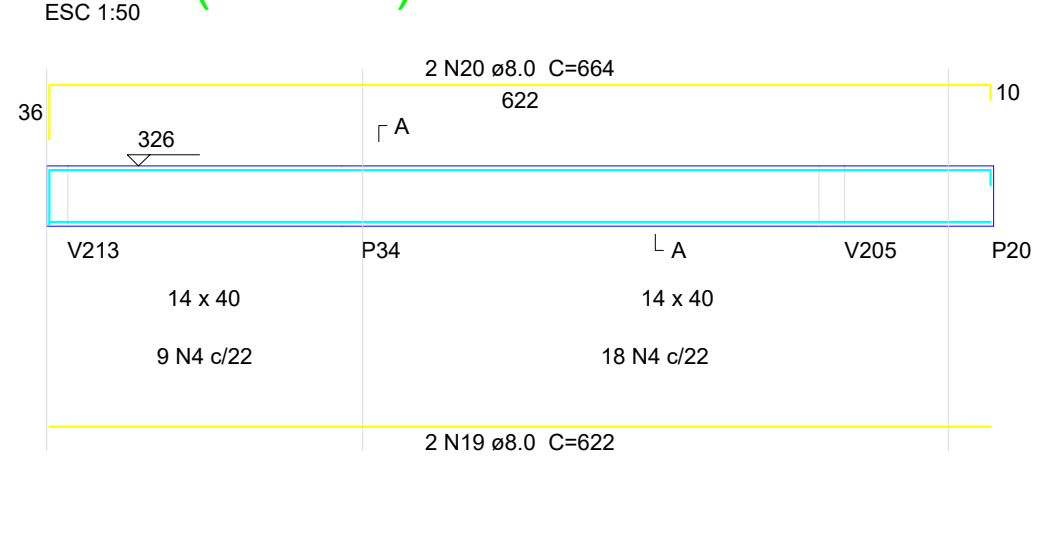
Relação do aço

ACO	N	DIAM (mm)	QUANT	C.UNIT (cm)	C.TOTAL (cm)
CA60	1	5.0	87	143	12441
	2	5.0	10	83	830
	3	5.0	2	44	88
	4	5.0	365	103	37904
	5	5.0	2	84	168
	6	5.0	2	363	726
	7	5.0	2	375	750
	8	5.0	30	165	4950
	9	5.0	2	404	808
	10	5.0	51	109	5559
	11	5.0	41	63	2593
CA50	12	8.0	2	595	1190
	13	8.0	2	432	864
	14	8.0	2	44	88
	15	8.0	2	1173	2346
	16	8.0	2	297	594
	17	8.0	2	1198	2396
	18	8.0	2	347	694
	19	8.0	2	622	1244
	20	8.0	2	664	1328
	21	8.0	4	285	1140
	22	8.0	2	325	650
	23	8.0	2	352	704
	24	8.0	2	392	784
	25	8.0	2	185	370
	26	8.0	2	236	472
	27	8.0	2	688	1376
	28	8.0	2	734	1468
	29	8.0	2	118	236
	30	8.0	2	164	328
	31	8.0	2	118	236
	32	8.0	2	146	292
	33	8.0	2	699	1398
	34	8.0	2	196	392
	35	8.0	2	184	368
	36	8.0	2	637	1274
	37	8.0	2	669	1338
	38	8.0	2	339	678
	39	8.0	2	117	234
	40	8.0	2	163	326
	41	8.0	2	273	546
	42	8.0	4	527	2108
	43	8.0	2	577	1154
	44	8.0	4	283	1132
	45	8.0	4	333	1332
	46	8.0	2	528	1056
	47	8.0	2	568	1136
	48	8.0	2	567	1134
	49	8.0	2	526	1052
	50	8.0	2	566	1132
	51	8.0	2	657	1314
	52	8.0	2	673	1346
	53	10.0	6	111	666
	54	10.0	2	762	1524
	55	10.0	2	533	1066
	56	10.0	2	985	1970
	57	10.0	2	437	874
	58	10.0	2	493	986
	59	10.0	2	592	1184
	60	10.0	2	638	1276
	61	12.5	2	650	1300
	62	12.5	2	214	428
	63	12.5	2	237	474
	64	12.5	2	246	492
	65	12.5	2	674	1348

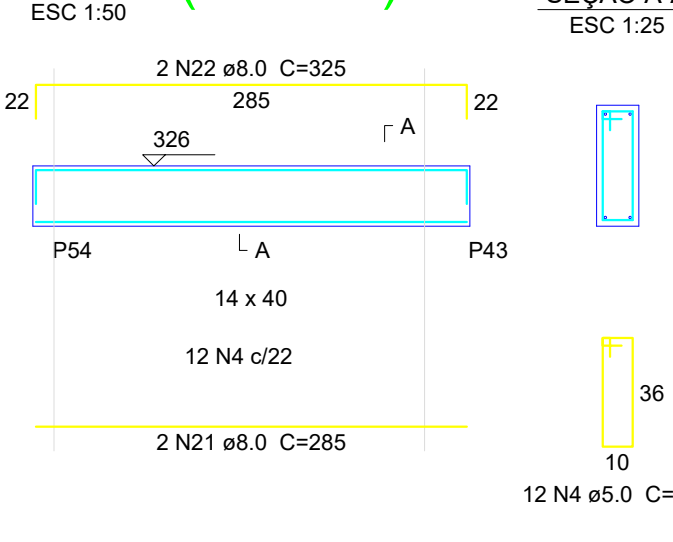
V297 (14 x 40)



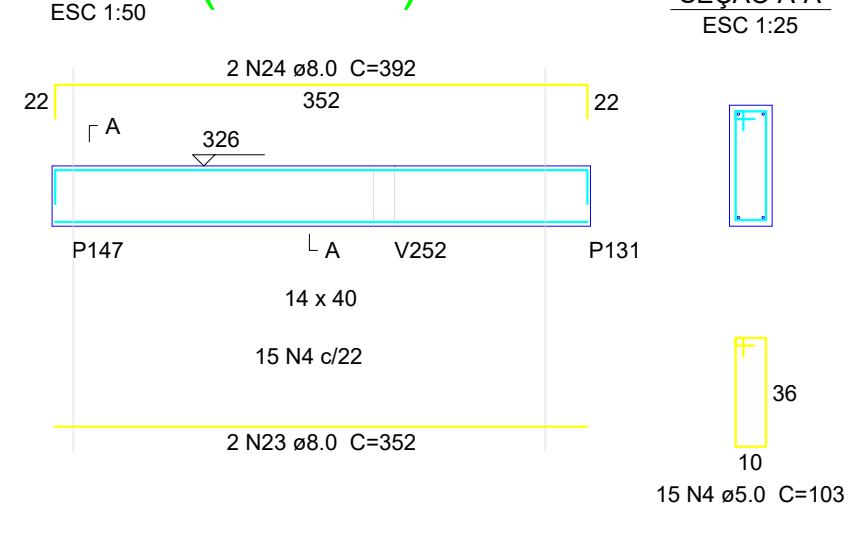
V299 (14 x 40)



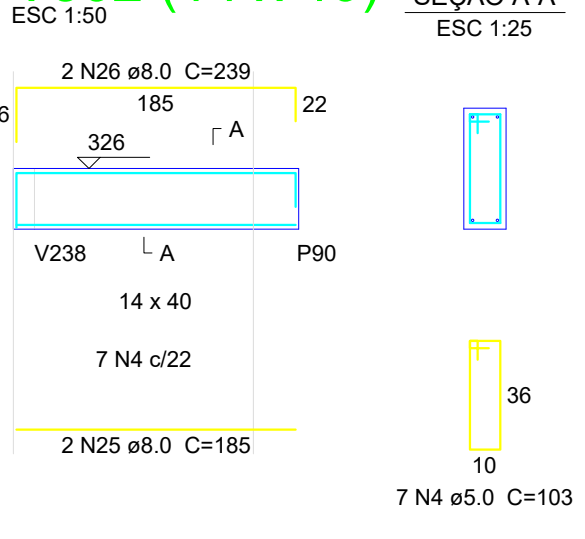
V300 (14 x 40)



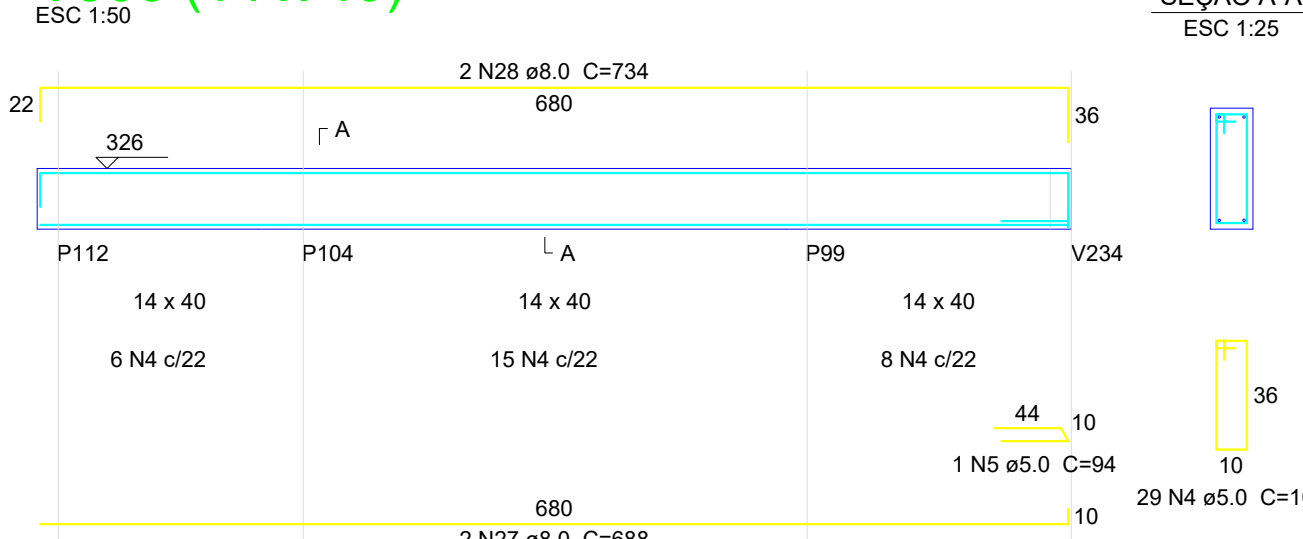
V301 (14 x 40)



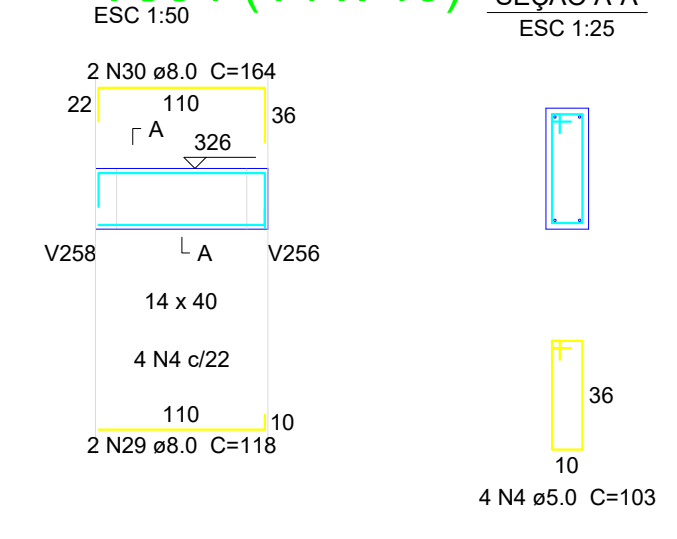
V302 (14 x 40)



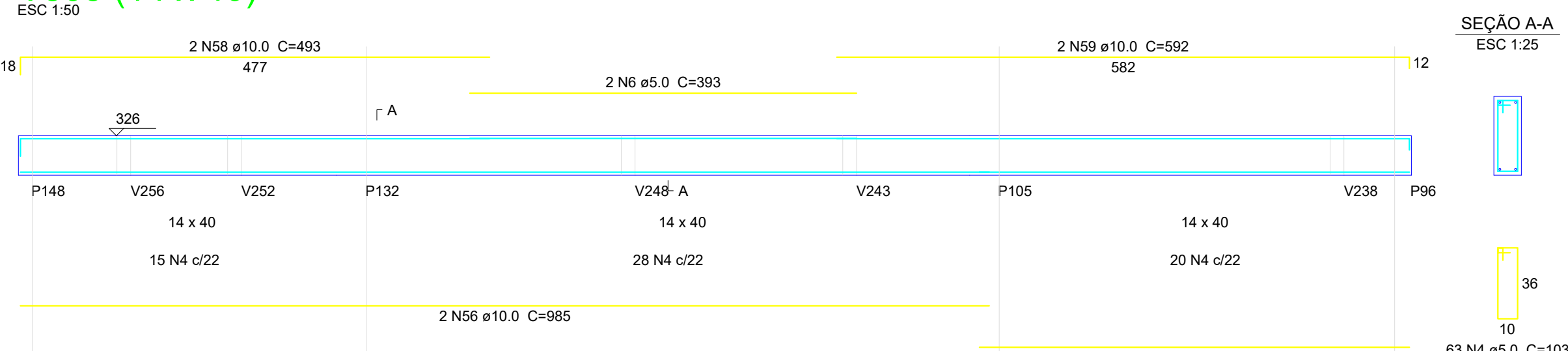
V303 (14 x 40)



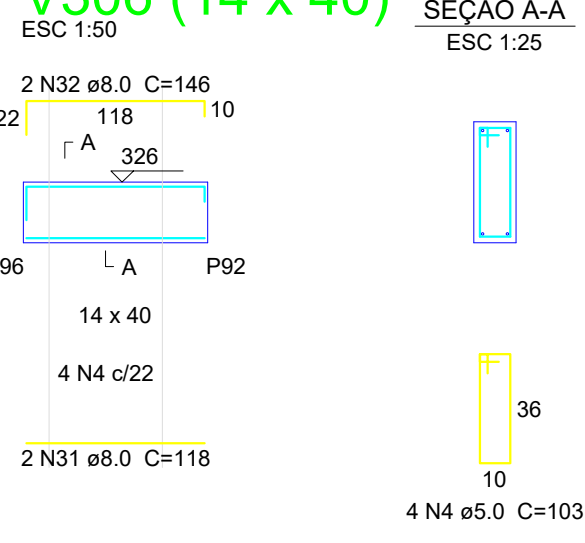
V304 (14 x 40)



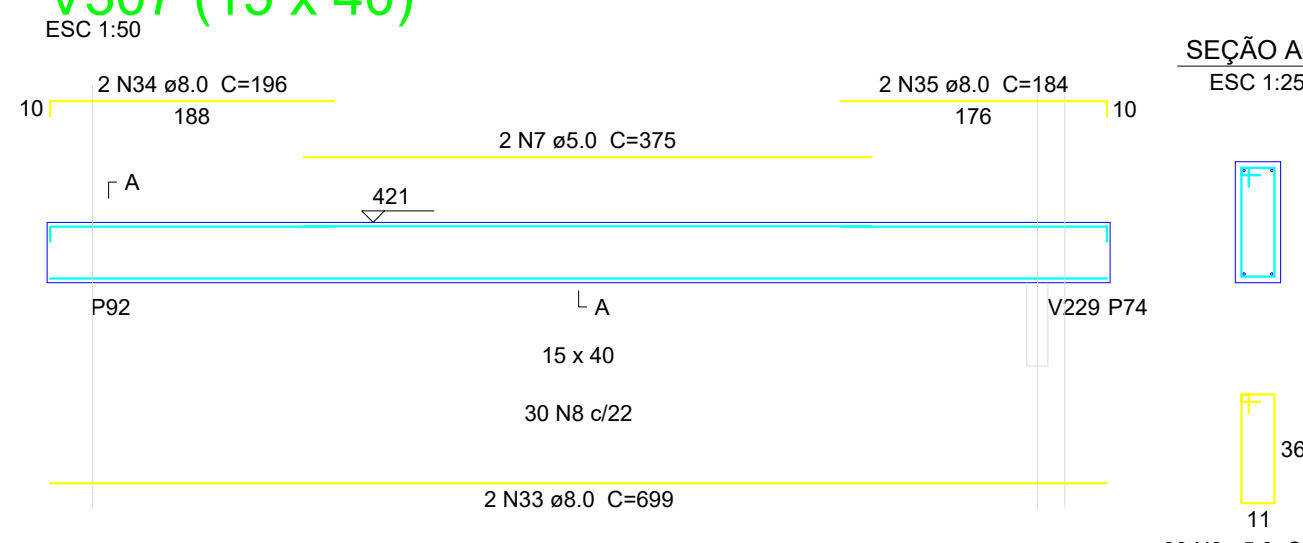
V305 (14 x 40)



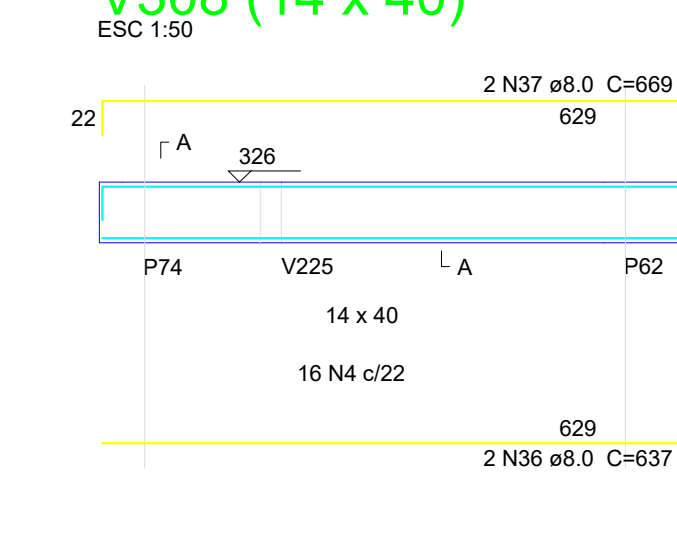
V306 (14 x 40)



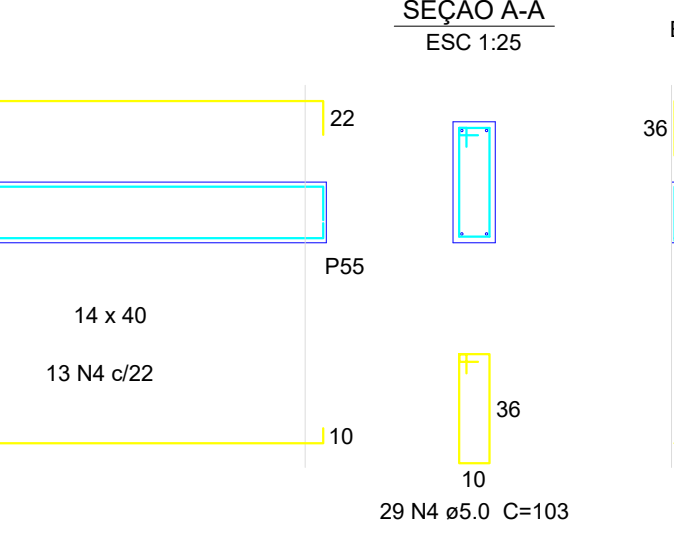
V307 (15 x 40)



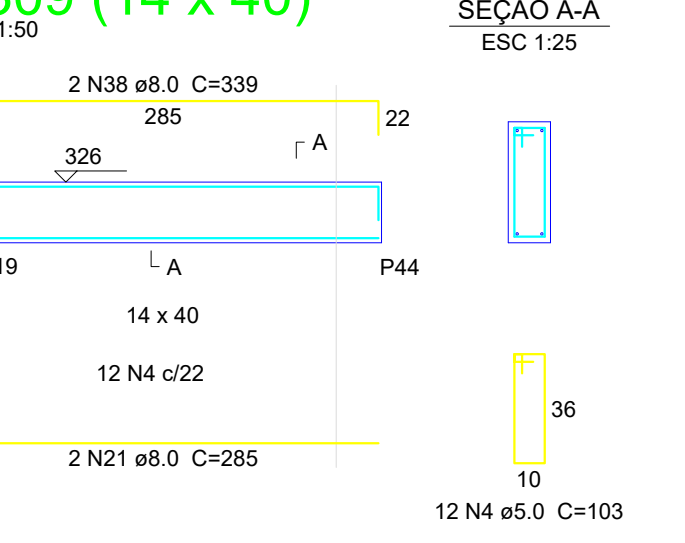
V308 (14 x 40)



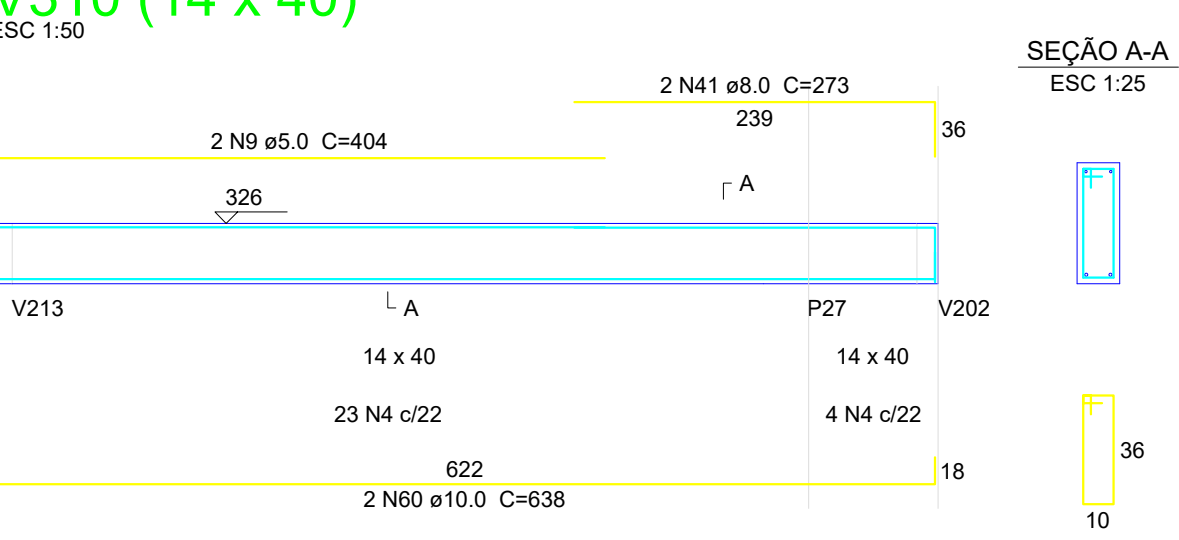
V309 (14 x 40)



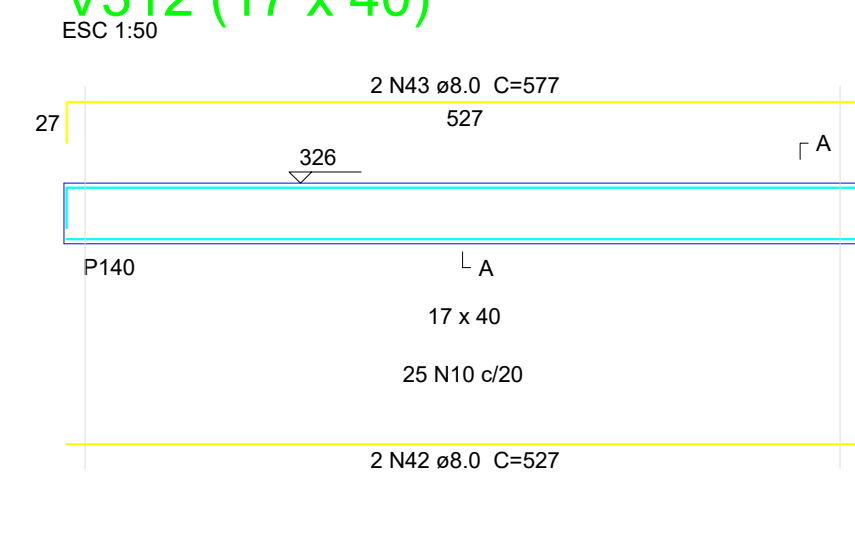
V311 (14 x 40)



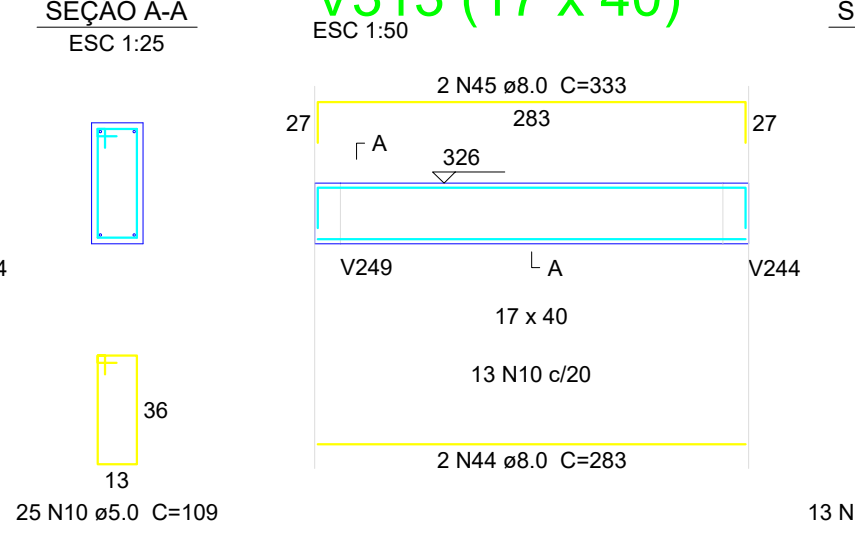
V310 (14 x 40)



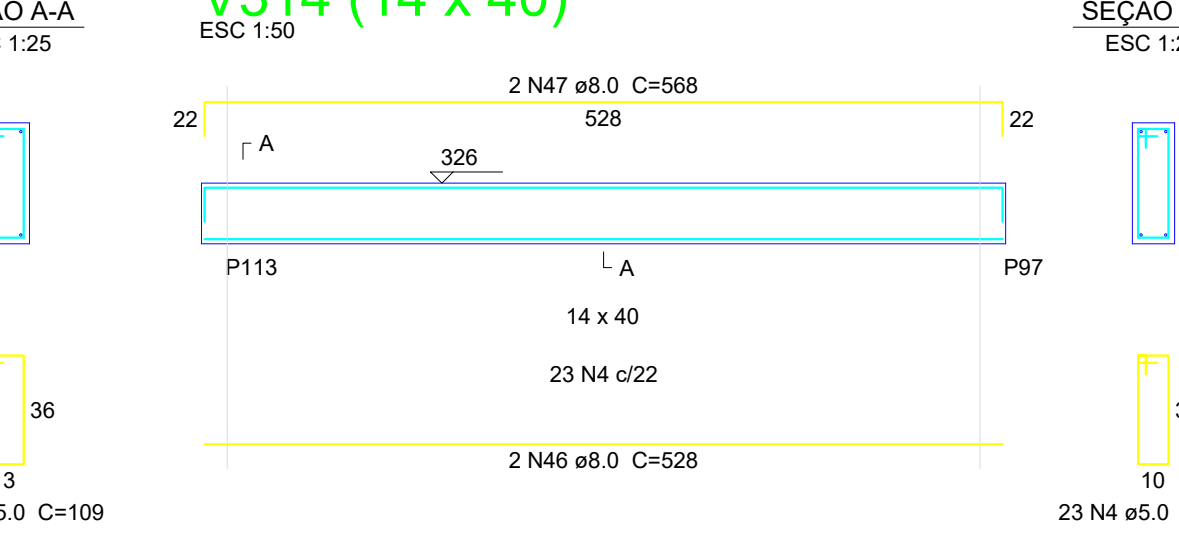
V312 (17 x 40)



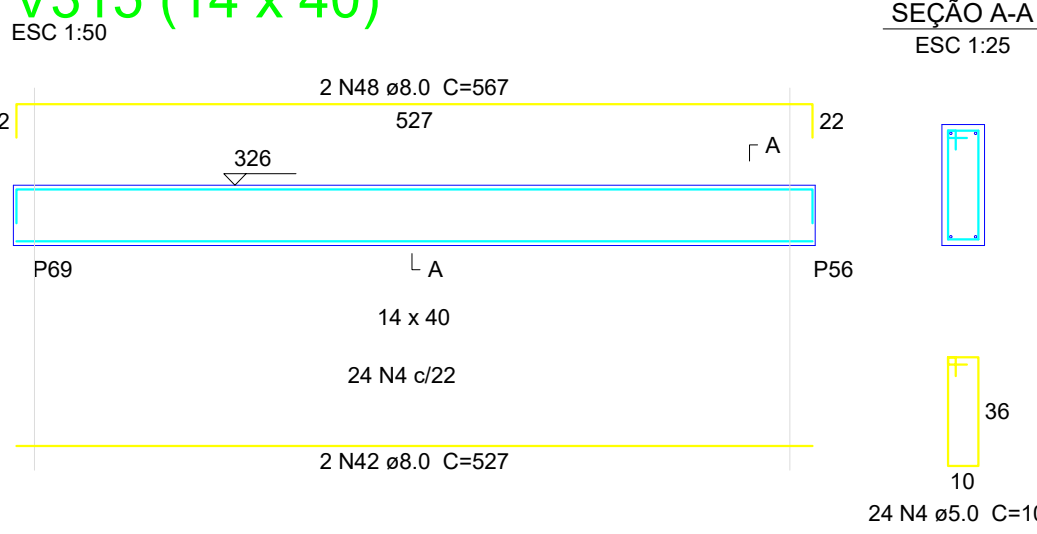
V313 (17 x 40)



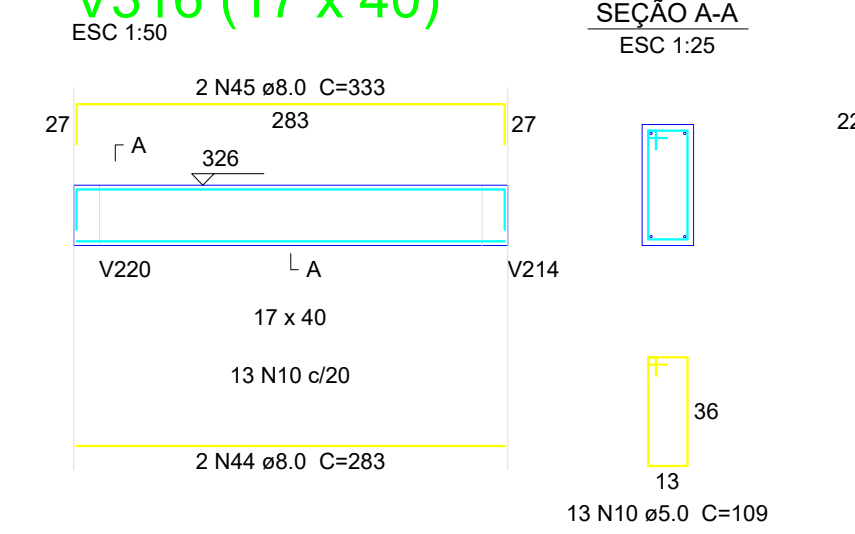
V314 (14 x 40)



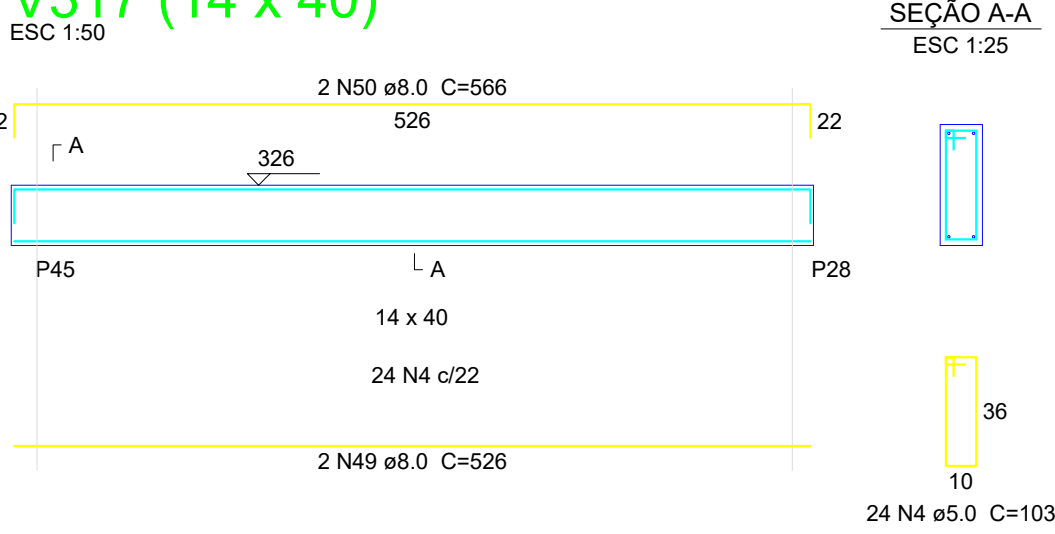
V315 (14 x 40)



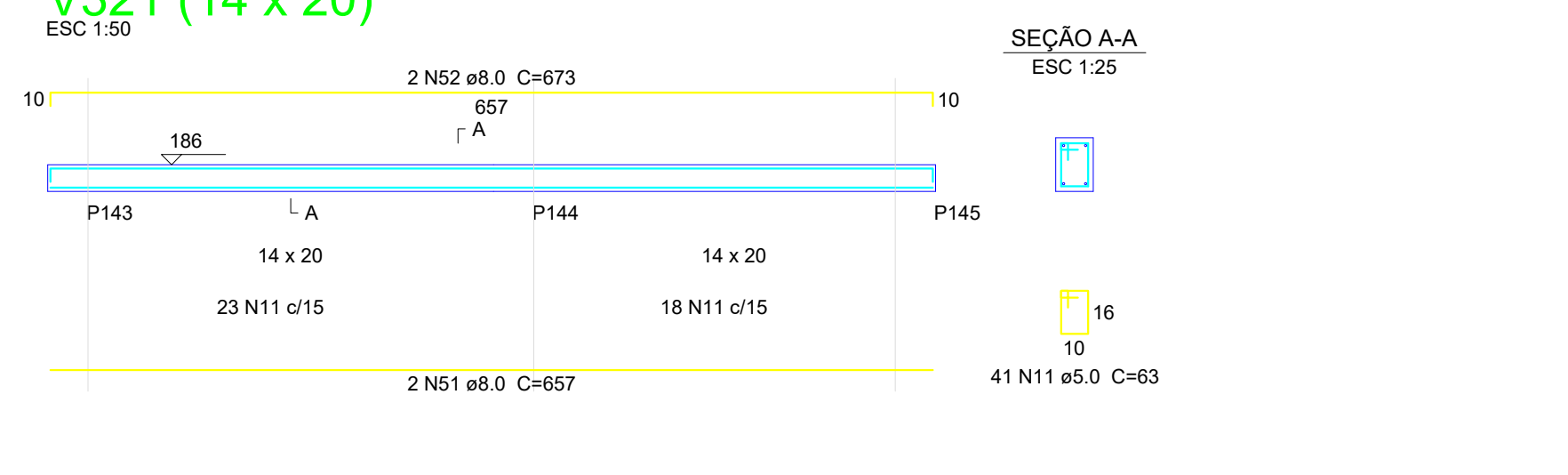
V316 (17 x 40)



V317 (14 x 40)



V321 (14 x 20)




Resumo do aço

ACO	DIAM (mm)	C.TOTAL (m)	QUANT (Barras)	PESO (kg)
CA50	8.0	392.6	33	154.9
	10.0	97.7	9	60.2
	12.5	46.5	4	44.7
CA60	5.0	650.9	55	100.3
CA50	259.8			
CA60	100.3			

Volume de concreto (C-30) = 7.35 m³  
Área de forma = 120.26 m²

03	JANEIRO/2025	Revisão geral da disciplina conforme a atualização da arquitetura. Redimensionamento dos elementos estruturais e acústico de elementos para adequação da arquitetura. Atendimento a NBR 6118/2014 e NBR 6122/2019.
02	JANEIRO/2017	Atendimento a NBR 9050/2015. Alteração: quadro de áreas, sanitários infantis 1 e 2, altura da plataforma, mobiliário e equipamento; altura da centrica nos sanitários, cor dos portões dos sanitários e altura da porta P44. Acústico das duchas higiênicas e escaninhos pré-escola. Retirada da chapa de aço abaixo da plataforma.
01	AGOSTO/2016	Alteração paredes - shaft para tubulação hidráulica e detalhamento; alteração da altura da plataforma. Correção: Blocos: B34, B36; Sapatas: S34, S36; Pilares: P33, P45, P57; Vigas nível 310: V22, V56, V75; Supressão: Viga nível 310: V72.
N°	DATA	DESCRIÇÃO

CONTROLE DE REVISÕES

		MINISTÉRIO DA EDUCAÇÃO
PROJETO PADRÃO - FNDE		
PROPRIETÁRIO: MUNICÍPIO DE BIRITE - CNPJ 18.715.490/0001-78 - Representante: DMS PINHEIRO		
ENDEREÇO: RUA ALCEDINA, Nº450 - JATOBÁ		
MUNICÍPIO - UF: BIRITINGA		
PROPRIETÁRIO:		
RESP. TÉCNICO: CAU / CREA		
AUTOR DO PROJETO: CA		